

# On the Pathology Scene

A PUBLICATION OF THE ILLINOIS SOCIETY OF PATHOLOGISTS

WINTER 2018

**Ron Champagne, MD**

## Message from the President

Greetings from the ISP! Welcome to the winter issue of the ISP newsletter. We are now at the end of my final year as president of the ISP. It has been an honor serving the ISP over the last two years. During this time we have been active in addressing payer issues throughout the state, supporting network adequacy and local coverage determination. Moreover, the ISP board established a Membership Affiliate Agreement with the College of American Pathologists as well as an affiliation with the Chicago Pathology Society in order to strengthen our advocacy efforts on both state and national levels.

Please join me in welcoming Kalisha Hill, MD as my successor. Kalisha was recently recognized by the CAP for her contributions to patient care and service for the advancement of pathology.

Pathologists in Illinois continue to face challenges to our scope of practice at both the national and state level. Whether you practice in an academic environment, community hospital, independent laboratory or are a resident in training, employed physician or in private practice, I remain firm in my belief that pathologists in Illinois have a bright future when we are informed of the pressing issues that affect us and are engaged in the process of finding solutions to those issues. The recent elections within our state and at the national level will result in new challenges as well as opportunities. Whether it's renewed payer issues, advocating on behalf of our patients, addressing local and national coverage determinations or addressing laboratory benefit management, the ISP will be at the forefront working on your behalf. I would like to thank the ISP Board of Directors, ISP members, supporters of our advocacy fund, the College of American Pathologists, and most importantly Pamela Cramer our Executive Director, who continue to support the ISP.

## Thank You!

I'd like to extend sentiments of sincere gratitude to the ISP governance team of officers, board members and staff who helped with advocacy efforts over the last two years.

Thank you to:

Phillip J. DeChristopher, MD, PhD, FCAP, President Elect  
 Kalisha Hill, MD, Secretary Treasurer  
 Robert DeCresce, MD, MBA – Immediate Past President  
 Pamela Cramer, CAE – Executive Director  
 Eleni Bourtsos, MD  
 John Abran, MD  
 Andrew Armstrong, MD  
 Brian Adley, MD  
 Ajay Patel, MD  
 Rohit Gupta, MD  
 Mark Pool, MD  
 Oliver Kim, MD  
 Archana Bargaje, MD  
 Manuel Doria, MD

Also a big thank you to Mr. Barry Ziman and Patricia Tennant from CAP's strategy team and Mr Greg Brodek of Duane Morris for his counsel on payer related issues.

Effective January 1, 2019 Kalisha Hill will be President and Phillip DeChristopher will remain as President-Elect.

Thank you all for your membership, donations, hard work and support of the ISP!

## Illinois at CAP House of Delegates

Rightfully Illinois was well represented at the CAP House of Delegates held during the Fall Meeting in October, Chicago.



Illinois Delegation to the CAP House of Delegates



Bruce Williams, MD, CAP President, Kalisha Hill, MD

### ISP Leader Receives Cap Distinguished Patient Care Award

Kalisha Hill received the CAP Distinguished Patient Care Award at the CAP Annual Meeting in October. This award recognizes and honors a pathologist who has made an outstanding contribution to patient care. This award is presented when merited not on an annual basis. Throughout her career, Dr. Hill has been engaged in activities related to community health... sponsoring community events including the Cancer Support Center, speaking at Women's Health Conference and the American Cancer Society's Relay for Life. Also she has pursued a role in public relations activities by serving as a panelist for nursing education, speaker for student career events, judge for the Chicago Public Schools student science fairs, annual speaker for National Youth Leadership Forum, and creator of "ask the pathologist" group forums for Cancer Support Center patients.

### ISP Hosted Reception at CAP Annual Meeting in October

As a kick-off to the College's Annual Meeting held in October at the Hyatt Regency in Chicago, ISP hosted a reception for all ISP CAP pathologists. Sponsorship of this event was provided by Integrated Oncology, part of LabCorp.



Kalisha Hill, MD, Patrick Godbey, MD- CAP President-Elect, Pam Cramer-ISP Executive Director, and Bruce Williams, MD- CAP President.



Eleni Bourtsos, MD, ISP Past President and Kalisha Hill, MD, President-Elect.

### ISP and CAP Host First Reception

Establishing a stronger relationship ISP and CAP hosted a wine and cheese reception in the CAP headquarters in Northfield IL in July. CAP leaders and ISP leaders and members enjoyed interacting and learning more about the initiatives and activities of each organization in presentations by CAP President Bruce Williams and ISP President Ron Champagne. The objective was the strengthen and showcase the local and national pathology organizations. Bristol Meyers Squibb (photo) sponsored this event. CAP staff was available to conduct tours of the headquarters facility and activities. A 2019 Reception is scheduled for Spring 2019



Ron Champagne, MD



Bruce Williams, MD



Rohit Gupta, MD, Mark Pool, MD and Randall McGoverney, MD



BMS Auditi DebRoy, PhD and Kalisha Hill, MD

## ISP Officers, Directors and Committees

### OFFICERS

**Ron Champagne, MD**

**President (2017-2018)**

Peoria-Tazewell Pathology Group,  
Graham Hospital  
309.647.5240 ext. 2247

**Phillip J. DeChristopher, MD, PhD,**

**FCAP**

**President-Elect (2017-2018)**

Loyola University Medical Center  
708.327.2609

**Kalisha Hill, MD**

**Secretary-Treasurer**

(2017-2018)

Presence St. Mary's Hospital  
Phone: 815.937.2282

**Robert P. DeCresce, MD, MBA**

**Immediate Past-President**

(2015-2018)

Rush University Medical Center  
312.942.8850

### DIRECTORS

**John Abran, MD (2016-2018)**

**Chicago Pathology Society Representative**

4Path, Ltd.

708.929.4326

**Brian Adley, MD (2017-2019)**

Midwest Diagnostic Pathology  
847.723.7361

**Oliver S. Kim, MD (2018-2020)**

President, Midwest Diagnostic  
Pathology

ACL Laboratories

847.842.4183

**Manuel Doria, MD**

(2017-2019)

Central Illinois Pathology  
309.624.9121

**Andrew Armstrong, MD**

(2017-2019)

Peoria-Tazewell Pathology  
Group, SC  
Unity Point Health Methodist  
Medical Center  
309.671.7776

**Eleni P. Bourtsos, MD**

(2017-2019)

DuPage Pathology Associates  
708.245.7885

**Ajay Patel, MD**

(2018-2020)

Central DuPage Hospital  
630.938.9134

**Mark Pool, MD**

(2017-2019)

Rush University Medical Center  
312.942.9975

**Rohit Gupta, MD**

(2017-2019)

Laboratory & Pathology Diagnos-  
tics, LLC

Edward Hospital

630.527.3460

### EXECUTIVE DIRECTOR

**Pamela Cramer, CAE**

847.441.7200

### COMMITTEES

#### **Legislative Affairs and**

#### **Advocacy Committee**

*Bob DeCresce, MD, CHAIR*

*Imad Almanaseer, MD*

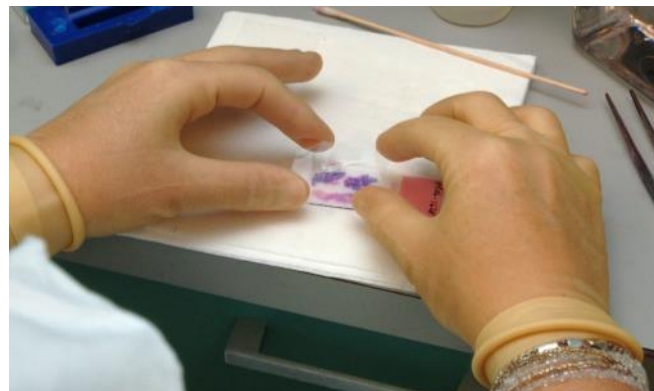
*Rick Anderson, MD*

*Reshma Ariga, MD*

#### **Membership Committee**

*Tushar Patel, MD, Chair*

## The Chicago Pathology Society Annual Slide Seminar



**Monday, April 8, 2019**

**University of Illinois College of Medicine**

**808 S Wood Street**

**College of Medicine East Tower**

**Room 268**

**Chicago, Illinois**

**5:30 Cocktails**

**7:00 Dinner and Lecture**

### **ABOUT THIS PUBLICATION**

*On the Pathology Scene is a publication of the Illinois Society of Pathologists and may not be reproduced in any form without prior written permission of the publisher. Views expressed by various authors are not necessarily those of ISP. All contributions are made with the understanding that they may be edited for clarity and placement purposes.*

*Editor: Ron Champagne, MD, President*

[rchampag2000@yahoo.com](mailto:rchampag2000@yahoo.com)

*Executive Director: Pamela Cramer, CAE*

[pcramer@illinoispathology.org](mailto:pcramer@illinoispathology.org)

*Production Editor: Mike Cramer*

[mrcramer@thepmgroup.com](mailto:mrcramer@thepmgroup.com)

*Offices: 902 Ash Street, Suite 200, Winnetka, IL 60093-2436  
(847-441-7200) [www.illinoispathology.org](http://www.illinoispathology.org)*