

On the Pathology Scene

A PUBLICATION OF THE ILLINOIS SOCIETY OF PATHOLOGISTS

SPRING/SUMMER 2023

MESSAGE FROM THE PRESIDENT



Rohit Gupta, MD

It is a privilege to serve as your president of the ISP. I would like to start by thanking Dr. Philip DeChristopher, former president, and Dr. Kalisha Hill, former Immediate past President for their leadership over the past several years. I'd also like to recognize our current slate of officers. Dr. DeChristopher and Dr. Tushar Patel will assume their new roles

of Immediate Past President and President Elect. I'm excited to announce that Dr. Mark Pool is approved to be our new Secretary/ Treasurer. We are pleased to welcome Drs. Vijaya Reddy, Luis Blanco, Jodi Speiser and Sandra Haddad to our Board of Directors. Our board consists of a mixture of pathologists with a broad range of interests and from a variety of practice settings. I know I speak for all of us when I say that we are excited to do our best to advance the interests of Pathologists in Illinois. If you have any issues or concerns that your practice encounters, please feel free to reach out to any of our Directors.

Over the past few years, I have marveled at the dedication of our fellow members as they stepped up to the challenges presented by a deadly pandemic. Our fellow pathologists implemented innovative tests, developed testing strategies, and contributed to public and hospital policies. Our fellow pathologists piloted their small businesses or large departments through unprecedented economic challenges. Now, as the government officially prepares to end the emergency pandemic measures this May, we anticipate a return to normalcy. We continue to face challenges such as workforce shortages, higher laboratory costs and decreased reimbursement, but I am confident that pathologists will help navigate these also. After all, the role of pathologists has never been more recognized or relied upon within healthcare systems. I look forward to meeting fellow

pathologists in person again and to hearing first hand their accomplishments.

A community of pathologists, ISP is one of the largest state pathology societies in the country with over 350 members. As practitioners in Illinois, we are fortunate to have so many outstanding healthcare organizations to support us and to participate in. ISP values its medical society partners including College of American Pathologists, Illinois State Medical Society and Chicago Pathology Society. Each organization provides benefit to both pathologists and to our organization. It is important to remember, though, that ISP is the only organization that specifically represents pathologist interests throughout the state of Illinois. In addition to providing opportunities for networking and collaboration, ISP tries to strengthen our field through advocacy. Through advocacy, we hope to help shape policy that increases healthcare access and healthcare quality for our patients; we hope to do this in a way that recognizes the contributions that pathologists make and that continues to make Illinois a great state to practice pathology in. ISP is only as strong as its membership. I encourage all members to renew and I ask members to speak with colleagues about group memberships. Providing an easy way of membership renewal, group memberships keep our state society strong. In addition, I ask you to consider donating as an individual or group to our advocacy fund. As we know, we are a small subspecialty that has a unique role in healthcare and faces unique challenges. Our advocacy fund allows us to make our voice heard within the state.

Thanks for reading my "letter to you" and I'll see you "further on up the road". I know there at least 2 pathologists that will appreciate the Springsteen references!

All the best,

Rohit

MARK YOUR CALENDAR—ISP Reception at CAP'23, Hyatt Hotel Chicago, October 9, 7:00 pm

RESIDENTS CORNER



**Constantine Kanakis,
MD MSc**

Within the last year, we've seen changes that lean toward the normalcy we remember before the pandemic. As such, ISP has had the distinct pleasure of going back to in-person events such as the CAP-ISP reception last fall. With that fun night of networking and story-sharing, pathologists and trainees from a number of professional backgrounds came together to celebrate our organizational achievements, both shared and planned. While we all await the days when in-person events are the default again (I suspect somewhat soon), we still lean into the leveraged technology of virtual meetings. Our recent Resident/Fellow-aimed webinar on pathology fellowship "Tips and tricks" was a hit! Our profession is heavily comprehensive and abundantly specialized; from a trainee perspective, the practice of pathology is as daunting as it is granular in detail. To me, this means there is a wealth of knowledge in the spaces that organized medicine provides. While learning and engaging with outcome-based educational metrics



and aiming for fellowship in our respective passions/interests, there is a gap in knowledge that nebulously involves the facets of legislation, advocacy, professional development, and practical, practice-based systems experience. Often acquired over time, involvement with organizations like the ISP can provide a fast track to staying ahead of the curve. Without a doubt this sets on apart from their peers in the stages of residency and fellowship training. Understanding the ins and outs of reimbursement models with support and/or threats from legislative changes locally or nationally is critical. Applied lessons to your future practice could create far better outcomes for one's practice and, ultimately, patients.

As I look to the future, continuing to work with ISP and other representative professional societies, what stands out more than access to experience, knowledge, or networking is *community*. This was evident at the CAP-ISP reception, on virtual display at our resident/fellow workshop, and is an ongoing part of my interaction with every member of ISP. Professional societies like ours give you a community to belong to, where you are supported, celebrated, mentored, and sponsored. Gaining a supportive

network of pathologists interested in improving the practice of pathology and advocating for those involved in our profession is worth joining. In my experience, the world of pathology feels excitingly dynamic. I recognize names across regions of states and counties in Illinois, and the same is happening nationally. Working and collaborating with this network has already had an invaluable effect on my career trajectory. I would urge residents to look into joining professional societies as early as they can. Learn about what opportunities await you anywhere from your local to national organizations and find more about organized medicine firsthand!

In the last few decades, laboratory medicine has undergone monumental changes and the landscape of clinical laboratories continues to evolve. Currently, laboratory services are an integral part of health care systems as laboratory tests play a major role in clinical care, providing practitioners with prognostic tools and establishing effective preventative measures, diagnosing diseases, especially at an early stage, making reliable prognoses and undertaking patient monitoring, as well as personalizing therapy and improving outcome. Contributing to the conceptual confusion in the diagnostic routine, the concept of "a single biomarker for a specific drug" has recently become outdated, engendering a multimarker diagnostic routine that necessitates the use of a set of different markers (for example, next-generation sequencing [NGS] and multiplex genotyping platforms). Furthermore, improvement in molecular technologies has been largely encouraged to respond to both the growing demand for molecular surveys in clinical practice and the simultaneous decrease in the amount of neoplastic samples in nearly every metastatic/advanced case. Innovative molecular diagnostic techniques, advances in precision disease treatments, and population-based screening programs for disease detection have made laboratory medicine an even more important part of modern medicine and health care. Cytopathologic specimens have the primary role in the molecular profiling of several neoplastic lesions. In my future career as a cytopathologist, I would like to emphasize the role of NGS applications in cytologic specimens which can be inadequate for sequential or single-gene diagnostic tests. The NGS approaches can also be applied successfully in DNA retrieved from fine-needle aspiration (FNA) needle rinses and effusion fluids. Technological innovations have enhanced the scope, quality, and sophistication of laboratory services, to the real benefit of health professionals and patients alike. As pathologists and medical laboratory scientists, it is our responsibility to encourage and inspire the momentum that keeps technology moving forward, while simultaneously ensuring that its benefits are being applied properly to de-



**Sandra Haddad,
MD**

**You're Invited ISP CAP Reception at CAP Northfield Headquarters,
September 7, 6:30—8:30 pm**

live the care patients need. Healthcare and technology will never stop changing, growing, and learning – and neither will we.

SLEUTHING FOR RBC ANTIBODIES



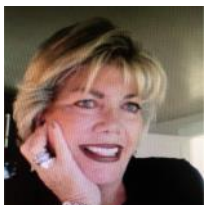
Mark Pool, MD

the patient or treating physician. Sharing of this information can save lives and reduce transfusion-associated morbidity.

The Alloantibody Exchange (<https://www.alloantibody.org>) is a voluntary national patient registry being developed by Dr. George Hauser of Yale University School of Medicine that allows the electronic sharing of patient transfusion history to address this challenge. Several organizations in Illinois have already provided letters supporting this effort and are in the process of joining the registry. Dr. Hauser recently addressed attendees at the annual meeting of the Illinois Association of Blood Banks in May. He provided a tour of the website and addressed concerns about patient data privacy. Dr. Hauser also outlined the process for getting your laboratory set up to participate in the registry. The website provides instructions for initiating this process as well as reaching out for more information.

ISP members should consider joining this program. It can improve transfusion practice in our state and region and help avoid transfusion delays and adverse events leading to better patient outcomes.

EXECUTIVE DIRECTOR COLUMN



Pamela Cramer, CAE

Happy to report that the Illinois Society of Pathologists membership remains strong, with a total of 375 members, including RITs from Loyola, Northshore, University of Chicago, University of Illinois Chicago, and Rush. ISP will be sponsoring the following events this year, so please get them on your calendars:

Residents Virtual Program and CAP Advocacy Update – August TBA

ISP-CAP Reception at CAP Northfield Headquarters, Thursday, September 7, 6:30-8:30

ISP Reception at CAP'23 Annual Meeting, Hyatt, Monday, October 9

Alloantibody identification is a challenge for transfusion services. Reviewing patient history for previously identified antibodies is a critical early step. Accurate information can be difficult to obtain, however, when a patient has had testing at other hospitals that is not electronically accessible from the EMR or even known by



Phillip DeChristopher, MD, PhD

CAP HOUSE OF DELEGATES

The Fall House of Delegates meeting will be held Saturday, October 7 at the Hyatt Regency Chicago. Registration for the HOD meeting is free and it's open to all members. Register on the CAP website.

The following ISP members were elected to the House of Delegates for the 2023-2026 term. Illinois Delegation has 24 seats and all seats are filled with three members on the waitlist.

Aadil	Ahmed*	Rush University Medical Center
Adam	Booth*	Northwestern Memorial Hospital
Dariusz	Borys*	Loyola University Medical Center
Eleni	Bourtsos*	Adventist Hinsdale Hospital
Bonnie	Choy*	Northwestern Memorial Hospital
Robert	Decresc*	University Pathology Consultants
Karen	Ferrer*	John Stroger Jr Hosp of Cook County
Alan	Frigy*	
John	Gao*	Springfield Memorial Hospital
Rohit	Gupta*	Edward Hospital
Bharati	Jhaveri*	
Kruti	Maniar*	NorthShore University HealthSystem
Swati	Mehrotra*	Loyola Univ Med Ctr
Vikas	Mehta*	University of Illinois Hospital
Kamran	Mirza	Loyola University Medical Center
Mitul	Modi*	Loyola Univ Med Ctr
Gladell	Paner*	The University Of Chicago
Ajay	Patel*	Northwestern Med. Central DuPage Hospital
Mark	Pool*	Rush University Medical Center
Vijaya	Reddy*	Rush University Medical Center
Stephen	Ruby*	Dupage Medical Group
Devendra	Trivedi	Methodist Medical Center of Illinois
Milind	Velankar*	Loyola Univ Med Ctr
Eva	Wojcik*	Loyola Univ Med Ctr

*Member ISP and Endorsed by ISP

ABOUT THIS PUBLICATION

Editor: Rohit Gupta, MD, President
r-gupta2@hotmail.com

Executive Director: Pamela Cramer, CAE
pcramer@illinoispathology.org

Production Editor: Mike Cramer
mrcramer@thepmcgroup.com

Financial Manager: Margaret Jones
maj347@aol.com

Offices: 41 Warrington Dr. Lake Bluff, IL 60044

(847-441-7200) www.illinoispathology.org